

ADVENTURES*

BY DISNEY®

Galapagos Islands (East - South)

Quito, Galapagos Islands



ADVENTURES*
BY DISNEY®

ADVENTURE HIGHLIGHTS

Gardener Bay & Osborn Islets

Floreana Island

Black Turtle & Tagus Coves - Isabela Island

Hiking in the Galapagos

Snorkeling and Kayaking in the Galapagos

El Barranco & Darwin Bay - Genovesa Island

Egas Port - Santiago Island



TOUR HIGHLIGHTS

Enhanced & exclusive excursions taking you inside the attractions

Private events and private guided tours of popular landmarks

Photo package of scenic, individuals and group (free download)

AGENCY AMENITIES

Free pre or post-night stay

Pre and post travel coordination

24/7 on call emergency service



Day 1

Quito

Arrive at Mariscal Sucre International Airport (UIO) any time

Hotel: Wyndham Quito Airport

Meals: no meals

Day 2

Quito, Baltra Island & North Seymour Island

Fly to Baltra Island

(Limited first class seats are available to upgrade)

Panga Boat Ride to Ship & Embarkation

North Seymour Island Snorkeling

Welcome Reception and Dinner
with Evening Shipboard Activities

Accommodations: Galápagos Legend

Meals: Breakfast, Lunch & Dinner



Day 3

Bartolome Island & Santiago Island

Bartolome Island Hike to Summit Trail & Snorkeling

Santiago Island Lava Bed Walk & Snorkeling

Accommodations: Galápagos Legend

Meals: Breakfast, Lunch and Dinner



Day 4

San Cristobal Island

Pitt Point Excursion and Glass Bottom Kayak

Cerro Brujo Beach Visit with Kayaking and Snorkeling

Evening Stargazing on the Equator

Accommodations: Galápagos Legend

Meals: Breakfast, Lunch and Dinner

Day 5

San Cristobal Island

Galapaguera de Cerro Colorado Nature Reserve

Lunch at the Voluntad de Dios Organic Farm

Interpretation Center & Tijeretas Hill Hike

Shopping in Puerto Baquerizo Moreno

Accommodations: Galápagos Legend

Meals: Breakfast, Lunch and Dinner



Day 6

Espanola Island

Gardner Bay, Gardner & Osborn Islets Tour

Suarez Point Naturalist Tour

Accommodations: Galápagos Legend

Meals: Breakfast, Lunch and Dinner



Day 7

Floreana Island

Floreana Island Excursion & Post Office Visit

Soccer with the Galapagos Legend Crew

Naturalist-Led Tour of Cormorant Point, Devil's
Crown and Champion Islet

Evening Onboard Activities

Accommodations: Galápagos Legend

Meals: Breakfast, Lunch and Dinner

Day 8

Santa Cruz Island

Charles Darwin Research Station & Fausto
Llerena Breeding Center

Centro de Education School Visit and Bazaar
Dragon Hill Hike & Snorkel

Rancho El Manzanillo Tour with Giant Tortoises

Punta Bowditch Beach

Accommodations: Galápagos Legend

Meals: Breakfast, Lunch and Dinner



Day 9

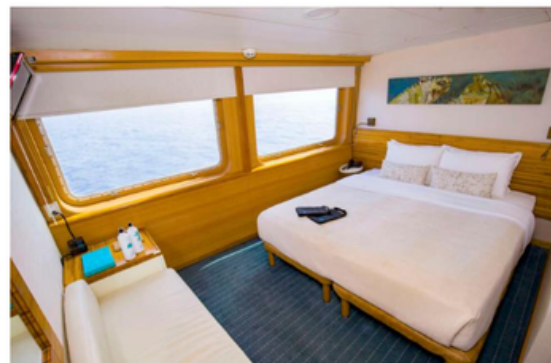
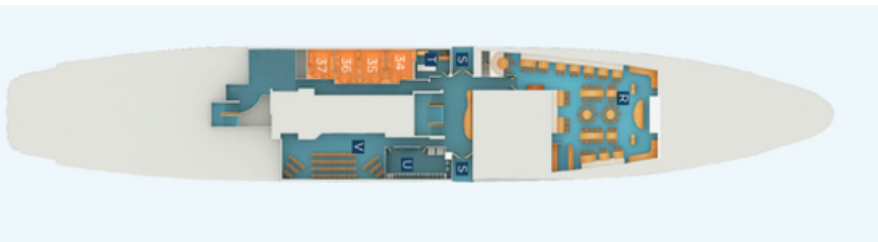
Baltra Island and Quito

Enjoy your final breakfast onboard before heading
for Seymour Airport to return to Quito
(Flight included limited upgrades available for
purchase)

Accommodations: Galápagos Legend

Meals: Breakfast and Lunch

Sea Deck



Earth Deck



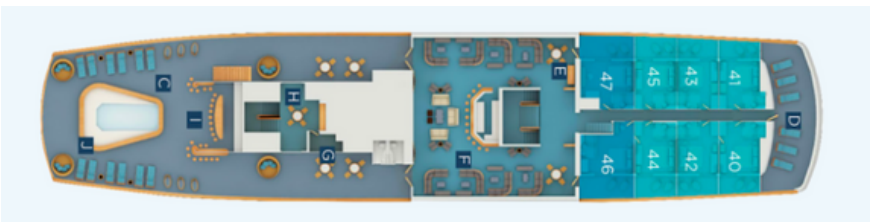
Junior Suite

Earth Deck

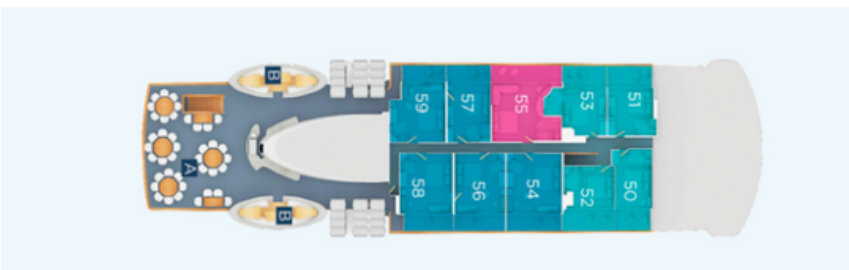
161 sq ft., 2 panoramic windows

\$8,999 per person double occupancy
\$13,499 single occupancy

Sky Deck



Moon Deck



Junior Suite Plus

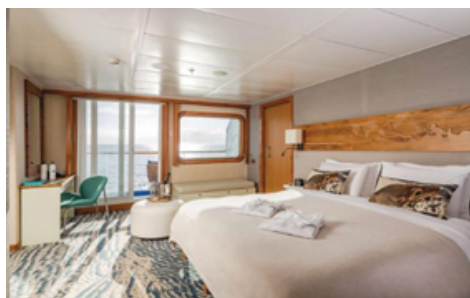
215 sq. ft, 2 panoramic windows
Earth Deck

\$9,699 per person double occupancy
\$14,499 single occupancy



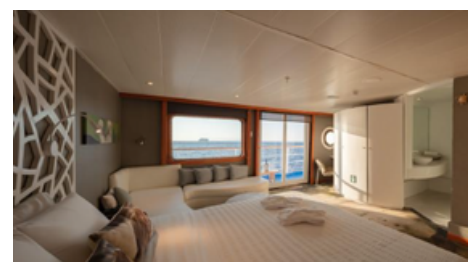
Balcony Suite

237 sq ft, Panoramic windows & private balcony
Sky & Moon Deck



Balcony Suite Plus

280 sq ft, Panoramic windows & private balcony
Sky & Moon Deck



Legend Suite

355 sq ft, Panoramic windows & private balcony
Moon Deck

\$10,999 per person double occupancy
\$16,499 single occupancy

\$13,199 per person double occupancy
\$19,799 single occupancy

\$16,299 per person double occupancy



Some of our tour favorites



KNOW BEFORE YOU GO

A passport with 2 remaining pages and a minimum of 6 months before expiration required

Highlights of Adventures are subject to change

Trip insurance is recommended

THE DETAILS

All hotels, meals, transfers, admissions and gratuities included as noted.

Optional air upgrades available to the ship



EZ Dis
By Instant Impressions
Travel Services
An Independent Travel Agency